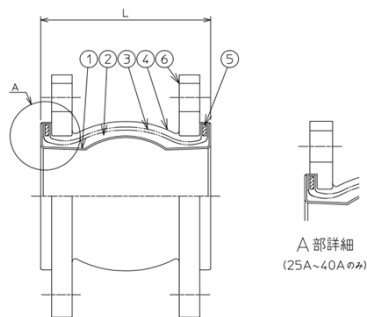


1. Before installation



The shape of ZRJ-BT

Table1 Parts List

No.	Name	Material
1	Liner	PTFE
2	Inner rubber	Synthetic rubber
3	Reinforcement fiber	Synthetic fiber
4	Outer layer rubber	Synthetic rubber
5	Solid ring	Carbon steel
6	Flange	Carbon steel

- Please confirm sure whether the diameter is correct.
- Please confirm whether there is any damage of sealing surface.
- Please confirm whether there is any damage of inside and outside.

2. Installation

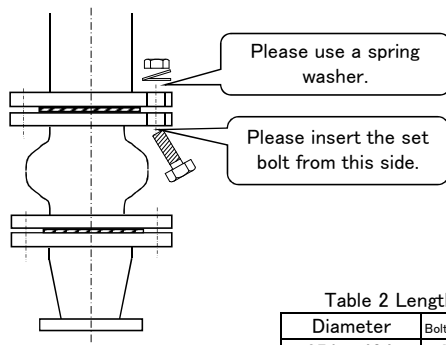


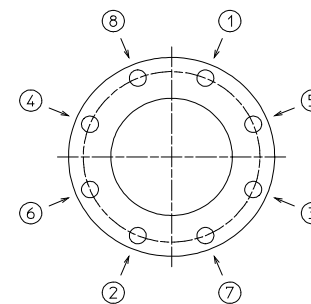
Table 2 Length of bolt

Diameter	Bolt Diameter x Length
25A~40A	M16x55mm
50A	M16x65mm
65A~100A	M16x70mm
125A	M20x80mm
125A~150A	M20x85mm

- ① Before installation, please wipe off the dust of the piping side flange and a rubber body seal side with a rag etc., check that there are no foreign substances, and set the product between the piping flanges.
- ② Please insert the set bolt toward the piping side from the product side. Moreover, in order to prevent the loosening of the nut, please use a spring washer.

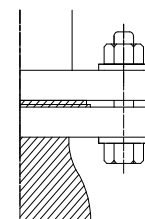
3. Tightening of the bolts

The order of bolt tightening.



- ① Please tighten the bolts diagonally and equally.
- ② Please tighten the opposite side of flange with same way.
- ③ When you use the bolt and nut made of stainless steel, please apply lubrication.

Please refer to the value of Table 3 for the tightening torque that becomes the standard of tightening.

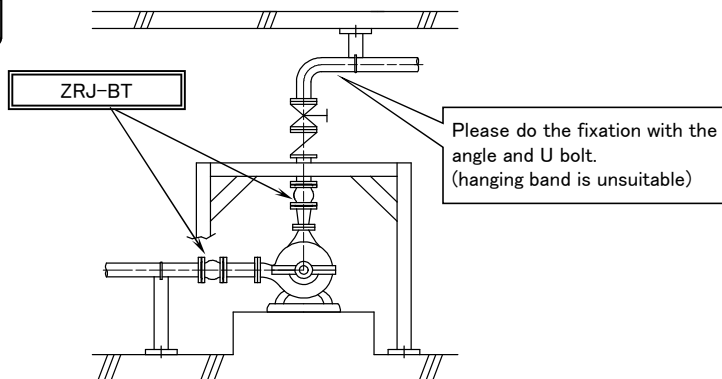


⚠ Please confirm whether the flange face is parallel before tightening.

Table3 Tightening torque

Diameter	Tightening torque
25A~40A	30N·m
50A~100A	30N·m
125A~200A	40N·m

Completion



NOTES

- 1) This product is not designed for absorb the axial movement but vibrations.
- 2) The piping system might resonate when the fixation of piping is insufficient. Please do the fixation near ZRJ-BT.
- 3) Please carry out the welding work of the piping before the attachment of our product. If you have to carry out the welding work after attaching the piping, please earth the welding properly, also put a protective cover around our product so that the welding current does not flow into the piping system.
- 4) On the discharge side must be attached in this order reducer, a product, non return valve, and stop valve.

